

BID TABULATION FOR:**BID OPENING DATE:****BID OPENING LOCATION:****TABULATION BY:****TABULATION DATE:****LJA JOB NO.**

CONSTRUCTION OF THE FULSHEAR LAKES LIFT STATION NO. 3 TO SERVE FORT BEND COUNTY MUNICIPAL UTILITY DISTRICT NO. 216

FORT BEND COUNTY MUNICIPAL UTILITY DISTRICT NO. 216

CITY OF FULSHEAR E.T.J., FORT BEND COUNTY, TEXAS

FEBRUARY 19, 2026

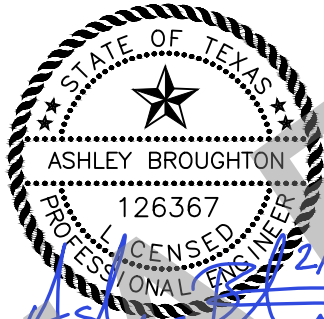
LJA ENGINEERING, INC.

F. LEMUS

FEBRUARY 19, 2026

2493-0149 (9.2)

BIDDER NAME	BASE BID	PROPOSED DURATION (DAYS)
1) PROVIDENCE WATER GROUP, LLC	\$859,130.00	210 \ 240
2) PELTIER BROTHERS CONSTRUCTION, LLC	\$876,772.00	280 \ 310
3) GAEL, INC	\$982,811.00	250 \ 280
4) AR TURNKEE	\$988,431.00	210 \ 260



I, Ashley Broughton, PE, hereby certify these bid tabulations to be true and correct.

BID TABULATION FOR:

BID OPENING DATE:
BID OPENING LOCATION:
TABULATION BY:
TABULATION DATE:
LJA JOB NO.

CONSTRUCTION OF THE FULSHEAR LAKES LIFT STATION NO. 3 TO SERVE FORT BEND COUNTY MUNICIPAL UTILITY DISTRICT NO. 216
FORT BEND COUNTY MUNICIPAL UTILITY DISTRICT NO. 216
CITY OF FULSHEAR E.T.J., FORT BEND COUNTY, TEXAS
FEBRUARY 19, 2026
LJA ENGINEERING, INC.
F. LEMUS
FEBRUARY 19, 2026
2493-0149 (9.2)

				1) PROVIDENCE WATER GROUP, LLC		2) PELTIER BROTHERS CONSTRUCTION, LLC		3) GAEL, INC		4) AR TURNKEE	
NO.	ITEM DESCRIPTION	UNIT	QTY	UNIT COST	TOTAL	UNIT COST	TOTAL	UNIT COST	TOTAL	UNIT COST	TOTAL
LIFT STATION ITEMS											
1.	SITE WORK AND ALL OTHER REQUIRED APPURTENANCES AS SHOWN ON PLANS AND NOT LISTED AS A SEPARATE BID ITEM, INCLUDING BUT NOT LIMITED TO SITE GRADING, HYDROMULCH SEEDING, SITE DRAINAGE, COMPLETE IN PLACE	LS	1	\$8,865.00	\$8,865.00	\$10,000.00	\$10,000.00	\$12,800.00	\$12,800.00	\$73,000.00	\$73,000.00
2.	6' DIAMETER CONCRETE WET WELL AND VALVE PAD, INCLUDING ACCESS HATCHES, VENT, AND ALL APPURTENANCES AS SHOWN ON DRAWINGS, COMPLETE IN PLACE	LS	1	\$335,066.00	\$335,066.00	\$453,000.00	\$453,000.00	\$340,950.00	\$340,950.00	\$127,000.00	\$127,000.00
3.	7.5 HP SUBMERSIBLE NON-CLOG PUMP WITH MINIMUM EFFICIENCY OF 47% AT 145 GPM AND 75 FEET T.D.H. WITH 1 PUMP RUNNING, INCLUDING DISCHARGE ELBOW, GUIDE RAILS, AND ALL APPURTENANCES FOR PROPOSED PUMPS, COMPLETE IN PLACE	EA	2	\$45,770.00	\$91,540.00	\$15,000.00	\$30,000.00	\$30,092.00	\$60,184.00	\$77,000.00	\$154,000.00
4.	SANITARY LIFT STATION AND VALVE PAD PIPING, INCLUDING PIPE, VALVES, FITTINGS, SUPPORTS, AND ALL APPURTENANCES, COMPLETE IN PLACE	LS	1	\$65,694.00	\$65,694.00	\$40,000.00	\$40,000.00	\$70,000.00	\$70,000.00	\$147,000.00	\$147,000.00
5.	6" REINFORCED CONCRETE PAVEMENT WITH 8" LIME OR CEMENT STABILIZED SUBGRADE EXTENDING 1 FOOT OUTSIDE OF PAVEMENT, COMPLETE IN PLACE	SY	352	\$100.00	\$35,200.00	\$80.00	\$28,160.00	\$167.00	\$58,784.00	\$187.00	\$65,824.00
6.	6" CRUSHED CONCRETE SITE COVER WITH GEOFABRIC (TENSAR TRIAX TX 140 OR APPROVED EQUAL), COMPLETE IN PLACE	SY	230	\$50.00	\$11,500.00	\$50.00	\$11,500.00	\$57.00	\$13,110.00	\$77.00	\$17,710.00
7.	8-FOOT TALL MASONRY FENCE INCLUDING 20-FOOT DOUBLE SWING GATE AS SHOWN ON PLANS, COMPLETE IN PLACE	LF	230	\$441.00	\$101,430.00	\$370.00	\$85,100.00	\$400.00	\$92,000.00	\$507.00	\$116,610.00
8.	4" DIAMETER PIPE BOLLARD, COMPLETE IN PLACE	EA	3	\$442.00	\$1,326.00	\$450.00	\$1,350.00	\$1,200.00	\$3,600.00	\$1,050.00	\$3,150.00
9.	10" ASTM D-2241 SDR 26, SEWER PIPE, ALL DEPTHS, INCLUDING EXCAVATION, BACKFILL AND BEDDING, COMPLETE IN PLACE	LF	6	\$1,361.00	\$8,166.00	\$200.00	\$1,200.00	\$1,000.00	\$6,000.00	\$503.00	\$3,018.00
10.	8" ASTM D-2241 SDR 26, SEWER PIPE, ALL DEPTHS, INCLUDING EXCAVATION, BACKFILL AND BEDDING, COMPLETE IN PLACE	LF	17	\$726.00	\$12,342.00	\$220.00	\$3,740.00	\$900.00	\$15,300.00	\$337.00	\$5,729.00
11.	4" AWWA C900 DR 18, FORCE MAIN, ALL DEPTHS, INCLUDING FITTINGS, EXCAVATION, BACKFILL AND BEDDING, COMPLETE IN PLACE	LF	45	\$75.00	\$3,375.00	\$85.00	\$3,825.00	\$227.00	\$10,215.00	\$111.00	\$4,995.00
12.	4'-0" DIA STANDARD SANITARY MANHOLE ALL DEPTHS INCLUDES EXCAVATION, BEDDING, BACKFILL, COMPLETE IN PLACE	EA	1	\$11,014.00	\$11,014.00	\$18,000.00	\$18,000.00	\$19,000.00	\$19,000.00	\$21,000.00	\$21,000.00
13.	1" SCHEDULE 40 PVC WATER LINE, ALL DEPTHS, INCLUDING FITTINGS, EXCAVATION, BACKFILL AND BEDDING, COMPLETE IN PLACE	LF	138	\$13.00	\$1,794.00	\$10.00	\$1,380.00	\$60.00	\$8,280.00	\$20.00	\$2,760.00
14.	PROVIDE AND INSTALL REDUCED PRESSURE BACKFLOW PREVENTER, NON-FREEZE HOSE BIB, ALL NECESSARY APPURTENANCES, COMPLETE IN PLACE	LS	1	\$4,339.00	\$4,339.00	\$500.00	\$500.00	\$7,276.00	\$7,276.00	\$7,100.00	\$7,100.00
15.	TRENCH SAFETY SYSTEM, ALL DEPTHS, COMPLETE IN PLACE	LF	68	\$10.00	\$680.00	\$1.00	\$68.00	\$44.00	\$2,992.00	\$10.00	\$680.00
16.	CONNECT PROPOSED FORCE MAIN TO FORCE MAIN (BY OTHERS), INCLUDE ALL NECESSARY ADAPTORS AND CONNECTORS OR STUB OUT AND PLUG, COMPLETE IN PLACE	LS	1	\$601.00	\$601.00	\$100.00	\$100.00	\$850.00	\$850.00	\$2,300.00	\$2,300.00
17.	CONNECT PROPOSED SAN SWR TO SAN MANHOLE (BY OTHERS), INCLUDE ALL NECESSARY ADAPTORS AND CONNECTORS OR STUB OUT AND PLUG, COMPLETE IN PLACE	LS	1	\$2,100.00	\$2,100.00	\$250.00	\$250.00	\$2,000.00	\$2,000.00	\$3,000.00	\$3,000.00
18.	STUB OUT AND PLUG 1" WATER LINE, INCLUDE ALL NECESSARY ADAPTORS AND CONNECTORS, COMPLETE IN PLACE	LS	1	\$65.00	\$65.00	\$200.00	\$200.00	\$500.00	\$500.00	\$750.00	\$750.00
19.	NEW 100A 480V SERVICE WITH ALL WIRE, CONDUIT, DISCONNECTS, METERING PER UTILITY STANDARDS, SERVICE RACK AND DUCT BANK TO TRANSFORMER POLE, COMPLETE AND IN PLACE	LS	1	\$33,509.00	\$33,509.00	\$65,000.00	\$65,000.00	\$65,368.00	\$65,368.00	\$67,000.00	\$67,000.00

BID TABULATION FOR:

BID OPENING DATE:
BID OPENING LOCATION:
TABULATION BY:
TABULATION DATE:
LJA JOB NO.

CONSTRUCTION OF THE FULSHEAR LAKES LIFT STATION NO. 3 TO SERVE FORT BEND COUNTY MUNICIPAL UTILITY DISTRICT NO. 216
FORT BEND COUNTY MUNICIPAL UTILITY DISTRICT NO. 216
CITY OF FULSHEAR E.T.J., FORT BEND COUNTY, TEXAS
FEBRUARY 19, 2026
LJA ENGINEERING, INC.
F. LEMUS
FEBRUARY 19, 2026
2493-0149 (9.2)

NO.	ITEM DESCRIPTION	UNIT	QTY	1) PROVIDENCE WATER GROUP, LLC		2) PELTIER BROTHERS CONSTRUCTION, LLC		3) GAEL, INC		4) AR TURNKEE	
				UNIT COST	TOTAL	UNIT COST	TOTAL	UNIT COST	TOTAL	UNIT COST	TOTAL
20.	NEW 30KW DIESEL GENERATOR, 100A ATS, ALL ASSOCIATED WIRE, CONDUIT, CONTROLS AND DUCT BANKS FROM GENERATOR TO ATS, COMPLETE AND IN PLACE	LS	1	\$67,008.00	\$67,008.00	\$48,500.00	\$48,500.00	\$77,227.00	\$77,227.00	\$97,000.00	\$97,000.00
21.	NEW LIFT STATION CONTROL PANEL WITH ALL BREAKERS, STARTERS, CONTROLS, CONDUIT, WIRE, LIGHTING TRANSFORMER AND DISTRIBUTION PER ONE-LINE DIAGRAM, COMPLETE AND IN PLACE	LS	1	\$33,436.00	\$33,436.00	\$40,000.00	\$40,000.00	\$66,125.00	\$66,125.00	\$33,000.00	\$33,000.00
SUBTOTAL LIFT STATION ITEMS					\$829,050.00		\$841,873.00		\$932,561.00		\$952,626.00
MISCELLANEOUS ITEMS											
1.	STORM WATER POLLUTION PREVENTION PLAN, INCLUDING ADMINISTRATION, MAINTENANCE, AND REMOVAL AS REQUIRED BY THE PLANS AND AS DIRECTED BY THE ENGINEER, (TO BE MAINTAINED UNTIL CONTRACTOR'S NOTICE OF TERMINATION IS SUBMITTED), COMPLETE IN PLACE	LS	1	\$1,250.00	\$1,250.00	\$3,000.00	\$3,000.00	\$2,800.00	\$2,800.00	\$2,000.00	\$2,000.00
2.	FILTER FABRIC FENCE, (TO BE USED ONLY AS DIRECTED BY THE ENGINEER), COMPLETE IN PLACE	LF	460	\$4.00	\$1,840.00	\$3.00	\$1,380.00	\$10.00	\$4,600.00	\$1.50	\$690.00
3.	INSTALLATION, MAINTENANCE AND REMOVAL OF CONCRETE TRUCK WASHOUT, COMPLETE IN PLACE	LS	1	\$500.00	\$500.00	\$500.00	\$500.00	\$1,800.00	\$1,800.00	\$300.00	\$300.00
4.	INSTALLATION, MAINTENANCE AND REMOVAL OF STABILIZED CONSTRUCTION EXIT, COMPLETE IN PLACE	LS	1	\$250.00	\$250.00	\$1,500.00	\$1,500.00	\$2,800.00	\$2,800.00	\$500.00	\$500.00
5.	DEWATERING FOR STRUCTURE, AS REQUIRED BY SOIL CONDITIONS, (TO BE USED ONLY AS DIRECTED BY THE ENGINEER), COMPLETE IN PLACE	LS	1	\$50.00	\$50.00	\$1.00	\$1.00	\$5,000.00	\$5,000.00	\$7,000.00	\$7,000.00
6.	DEWATERING OF LINE WORK (TO BE USED ONLY AS DIRECTED BY THE ENGINEER), COMPLETE IN PLACE	LF	68	\$30.00	\$2,040.00	\$1.00	\$68.00	\$50.00	\$3,400.00	\$20.00	\$1,360.00
7.	CONTROL OF SURFACE WATER (TO BE USED ONLY AS DIRECTED BY THE ENGINEER), COMPLETE IN PLACE	LS	1	\$50.00	\$50.00	\$1,500.00	\$1,500.00	\$1,000.00	\$1,000.00	\$1,000.00	\$1,000.00
8.	EXTRA CEMENT STABILIZED SAND, (1.5 SACKS OF CEMENT PER CUBIC YARD CEMENT STABILIZED SAND), (TO BE USED ONLY AS DIRECTED BY THE ENGINEER), COMPLETE IN PLACE	CY	10	\$60.00	\$600.00	\$20.00	\$200.00	\$60.00	\$600.00	\$20.00	\$200.00
9.	EXTRA 4,000 PSI CONCRETE WITH REINFORCING STEEL, (TO BE USED ONLY AS DIRECTED BY THE ENGINEER), COMPLETE IN PLACE	CY	5	\$250.00	\$1,250.00	\$450.00	\$2,250.00	\$450.00	\$2,250.00	\$101.00	\$505.00
10.	EXTRA COST OF UTILITY WET SAND CONSTRUCTION, ALL LINE SIZES AND DEPTHS, (TO BE USED ONLY AS DIRECTED BY THE ENGINEER), COMPLETE IN PLACE	LF	150	\$15.00	\$2,250.00	\$30.00	\$4,500.00	\$40.00	\$6,000.00	\$15.00	\$2,250.00
11.	ALLOWANCE FOR ELECTRIC SERVICE AS DIRECTED BY CENTERPOINT ENERGY, (TO BE USED ONLY AS DIRECTED BY THE ENGINEER). CHARGES FROM CENTERPOINT ENERGY SHALL BE PAID BY THE CONTRACTOR. THE AMOUNTS PAID, SUPPORTED BY INVOICES, SHALL BE INCLUDED IN PAY REQUESTS FOR REIMBURSEMENT WITHOUT A GENERAL CONTRACTOR MARKUP, COMPLETE IN PLACE	LS	1	\$20,000.00	\$20,000.00	\$20,000.00	\$20,000.00	\$20,000.00	\$20,000.00	\$20,000.00	\$20,000.00
SUBTOTAL MISCELLANEOUS ITEMS					\$30,080.00		\$34,899.00		\$50,250.00		\$35,805.00
BID SUMMARY											
LIFT STATION ITEMS					\$829,050.00		\$841,873.00		\$932,561.00		\$952,626.00
MISCELLANEOUS ITEMS					\$30,080.00		\$34,899.00		\$50,250.00		\$35,805.00
TOTAL AMOUNT BASE BID					\$859,130.00		\$876,772.00		\$982,811.00		\$988,431.00